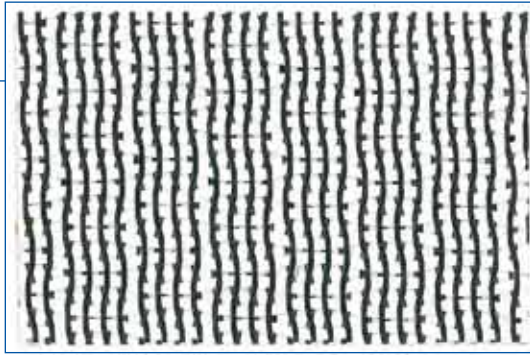
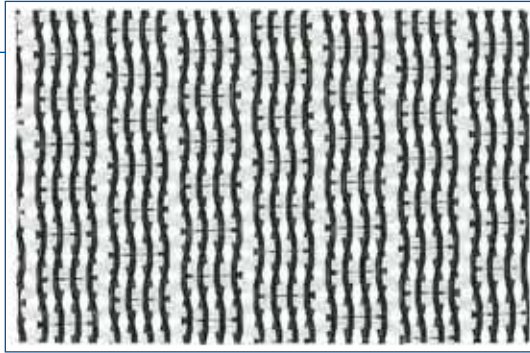


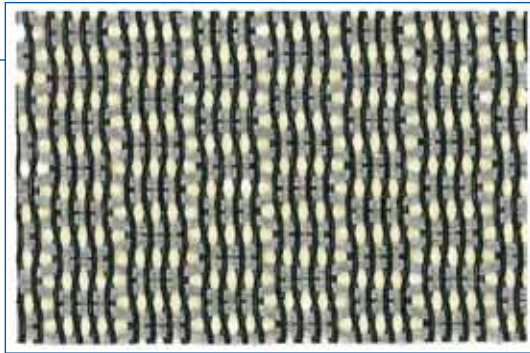
Color 24  
Natural



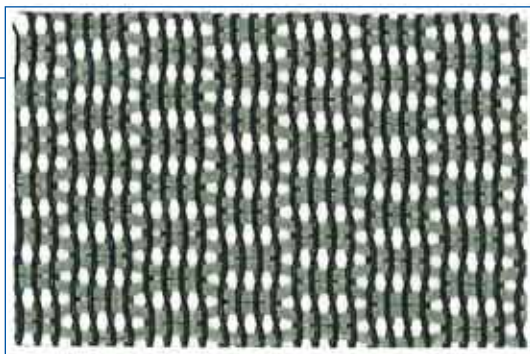
Color 58  
Dolphin



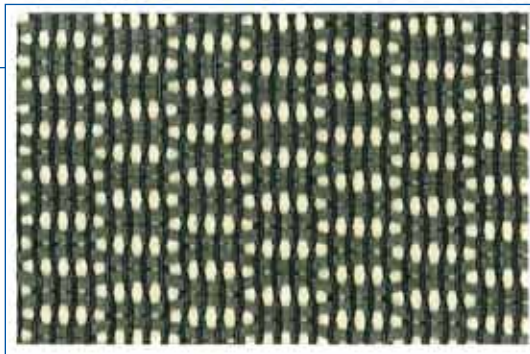
Color 55  
Cameo Taupe



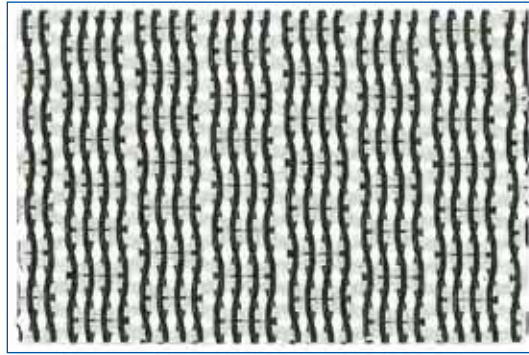
Color 5  
Gravel



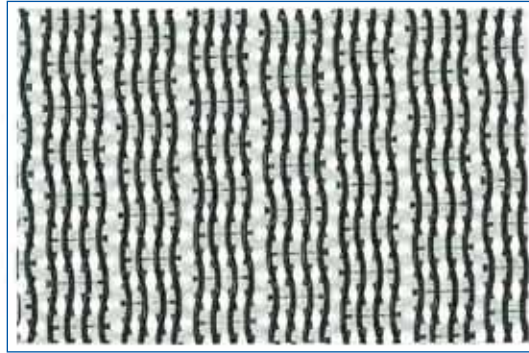
Color 3  
Autumn Gray



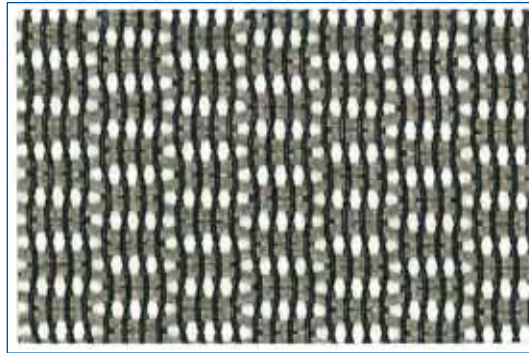
Color 21  
Silver



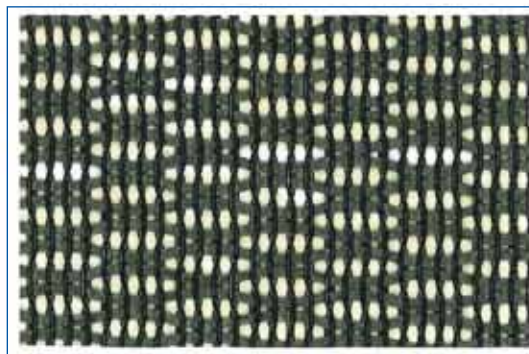
Color 53  
Arctic Ermine



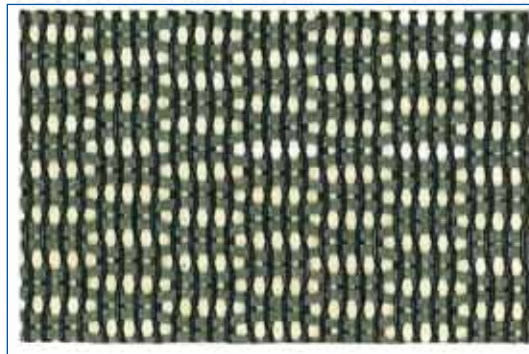
Color 7  
Bark



Color 2  
Dark Gray



Color 4  
Storm



# Collage™

## ELASTOMERIC FABRICS FOR SEATING APPLICATIONS

COLLAGE™ fabrics have a polyester co-polymer elastomeric monofilament on the warp direction. When stretched, this material yields excellent load-bearing properties and resiliency. The fill yarns may be polyester, nylon, or other fiber depending on the intended use.

### Patterns

COLLAGE™ is available in many different weave patterns, including jacquards, where specific designs and logos may be obtained.

### Colors

COLLAGE™ is available in many different colors, including custom colors.

### Tests

Properly applied COLLAGE™ fabrics typically show less than 5% load-bearing loss when tested according to BIFMA standards.

#### Test Procedures

	Test Results	
	Warp	Fill
Yarn Slippage (lbf) ASTM D 4034-92	63.3	42.0
Colorfastness to Water ASTM D 3597-95a, Sec. 7.6	Shade: 5 Stain: 5	
Colorfastness to Solvent ASTM D 3597-95a, Sec. 7.7	Shade: 5 Stain: 5	
Resistance to Pilling ASTM D 3511-82 (Brush)	5 - No Pilling	
Breaking Strength ASTM D 5034-95 (Grab)	406.7	233.0
Resistance to Pilling ASTM D 3511-99 (Brush)	5 - No Pilling	
Surface Abrasion ASTM D 3597-95A, Sec. 7.4	Passed 50,000 Cycles	
Abrasion Resistance	+50,000 Wyzenbeck	
Colorfastness to Crocking AATCC 8-2001	Dry - 4.5 Wet - 5	
Colorfastness to Light AATCC 16-2003 (Opt. 3)	After 40 Std. Hours Grade 5	
California 117	Pass	

### Application

COLLAGE™ fabrics must be tensioned for the fabric to work properly and yield a comfortable, resilient seat. We generally recommend to stretch the fabric 5%. COLLAGE™ fabrics can be sewn, stapled, and adhesive-bonded to other substrates.

### Cleanability

Use mild household or hospital detergents. DO NOT use petroleum distillates.

#### British Standards 5852: Section 4, 12.3

Ignition Source 1	Test Results
Butane Flame	#1 PASS (No flaming or progressive smoldering)

#### British Standards 5852: Section 4, 12.2

Ignition Source 1	Test Results
Cigarette	#1 PASS (No flaming or progressive smoldering)

Note: Test results will vary depending on specific weave. Other flammability requirements may be met depending on specifications.



911 Northridge St. • Greensboro, NC USA 27403  
ph. 336-379-7777 • fax 336-379-7774  
janet.walker@leggett.com • info@matrex.net  
www.matrex.net

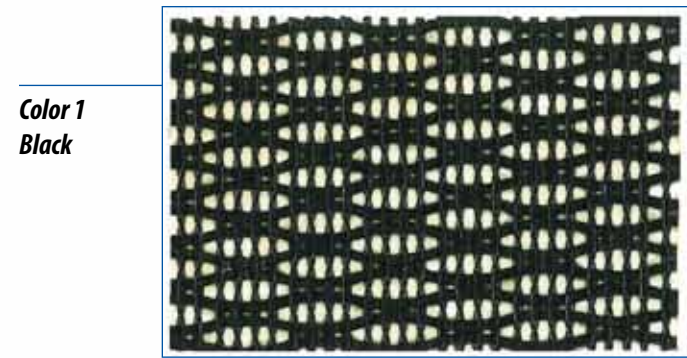


## ELASTOMERIC FABRICS FOR SEATING APPLICATIONS

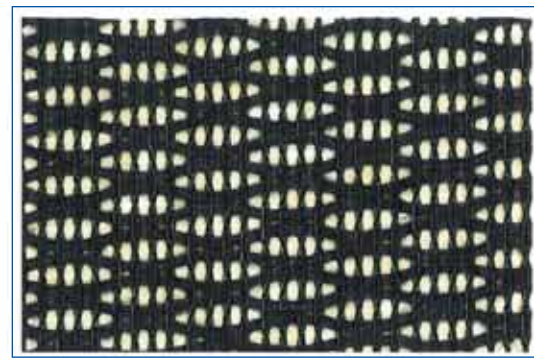
Innovative Technologies For Beautiful Furniture



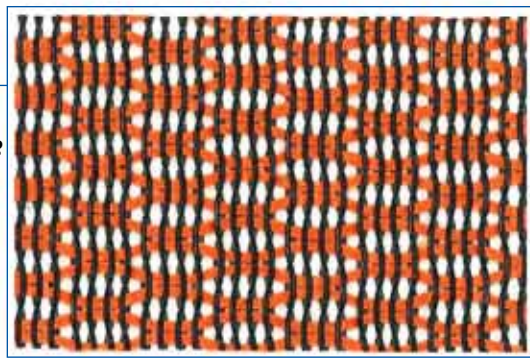
A DIVISION OF Leggett & Platt. COMPONENTS COMPANY, INC.



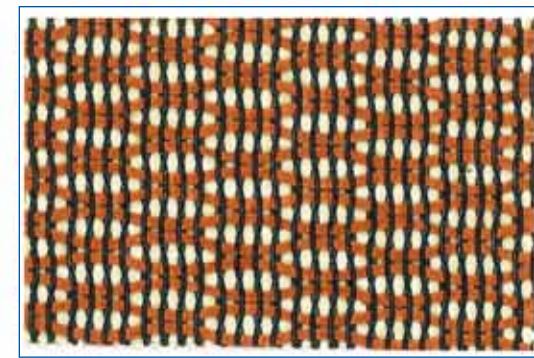
Color 1  
Black



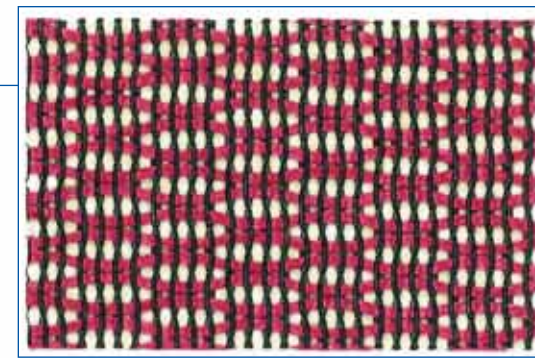
Color 17  
Navy



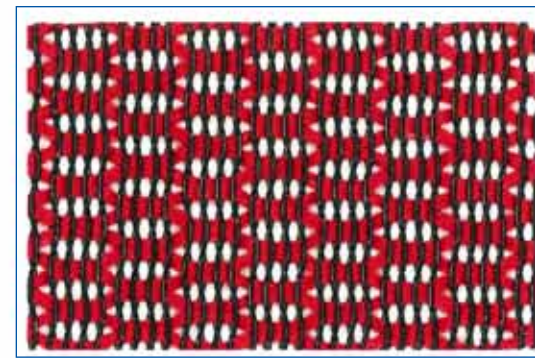
Color 66  
Bright Orange



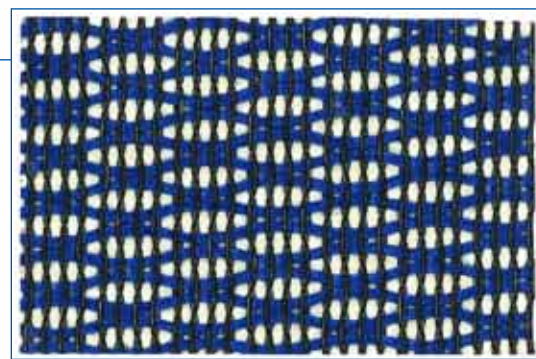
Color 16  
Clay



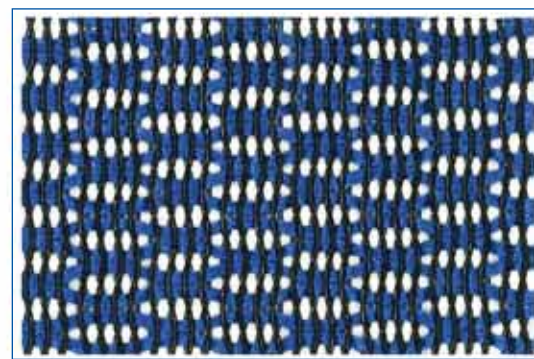
Color 15  
Red Brick



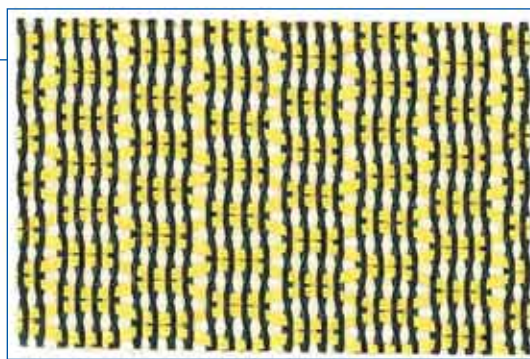
Color 20  
Scarlet



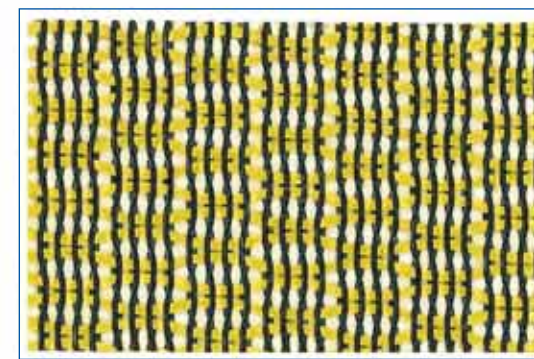
Color 11  
Bright Blue



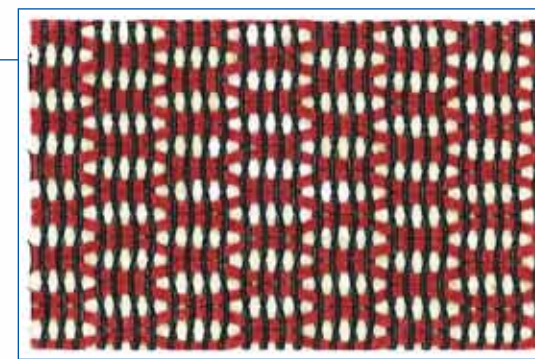
Color 18  
Royal



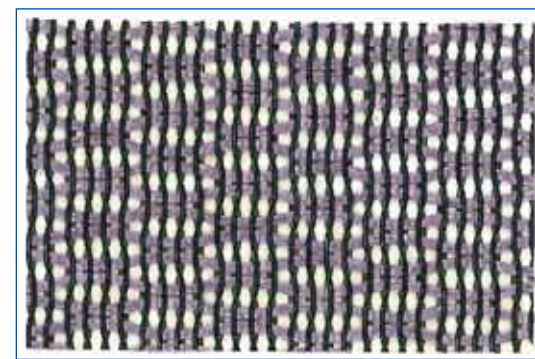
Color 22  
Canary



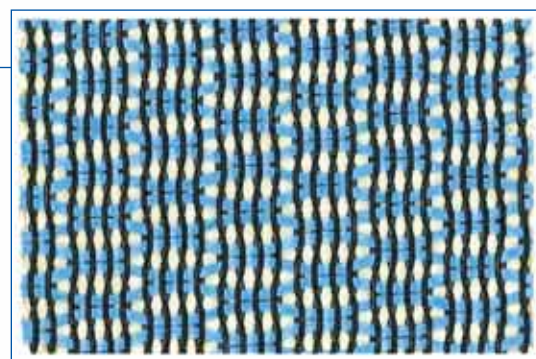
Color 25  
Ochre



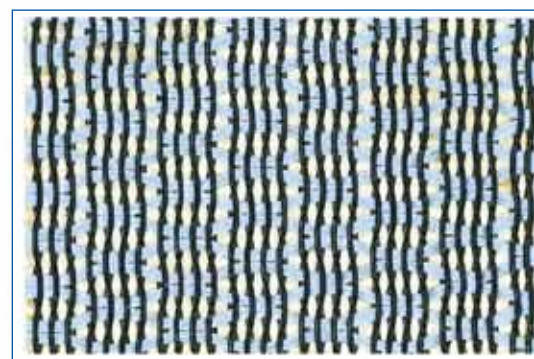
Color 56  
Red



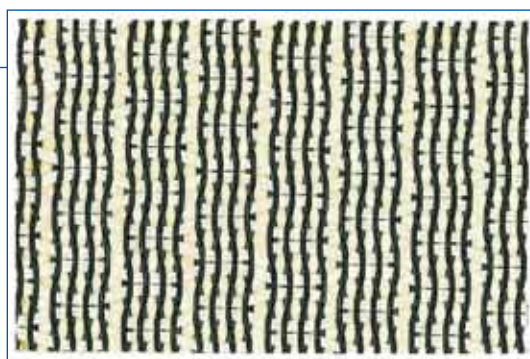
Color 12  
Lavender



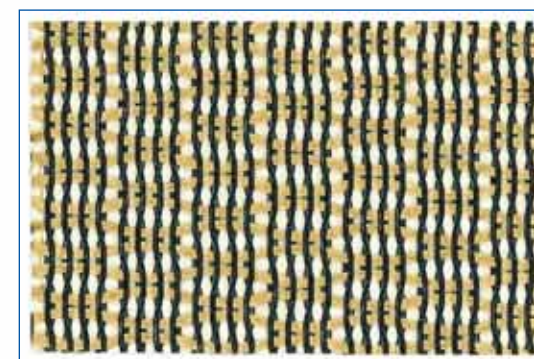
Color 27  
Cobalt



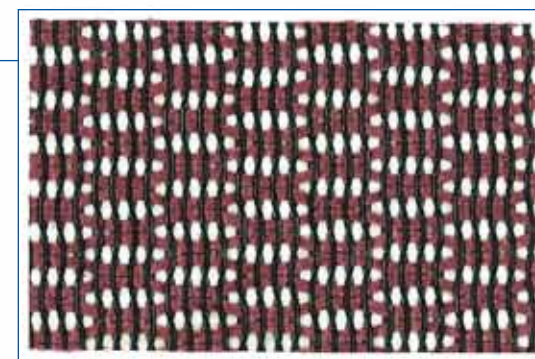
Color 67  
Sky Blue



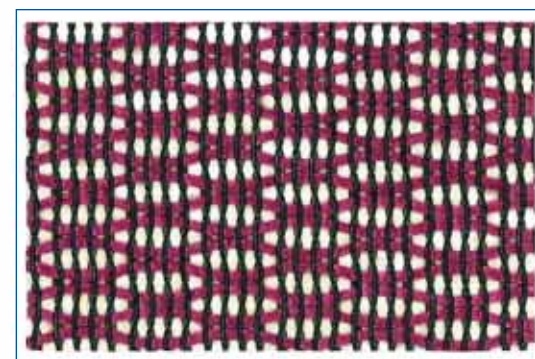
Color 29  
Ivory



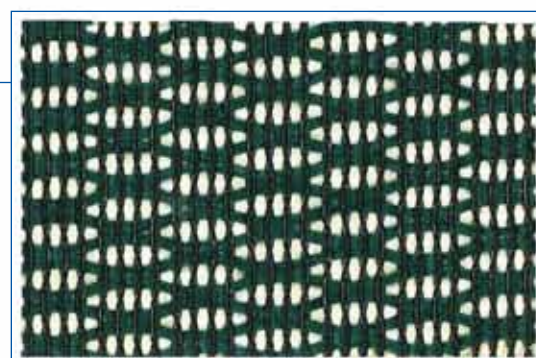
Color 52  
Bronze



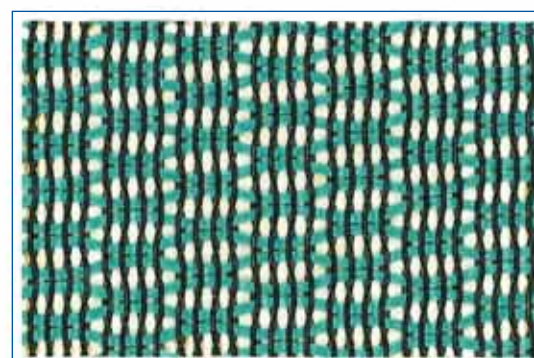
Color 9  
Maroon



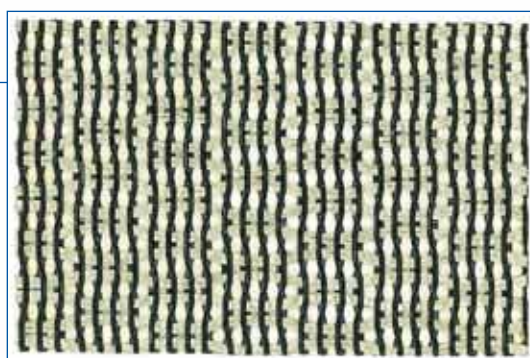
Color 10  
Plum



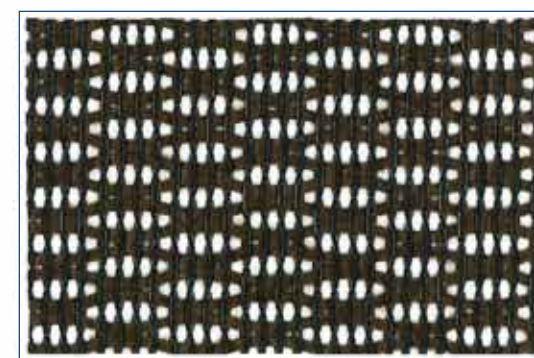
Color 19  
Moss



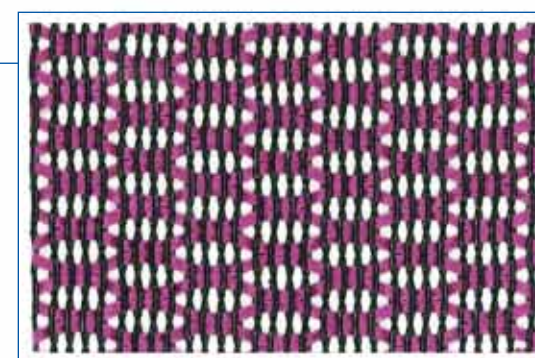
Color 28  
Hunter



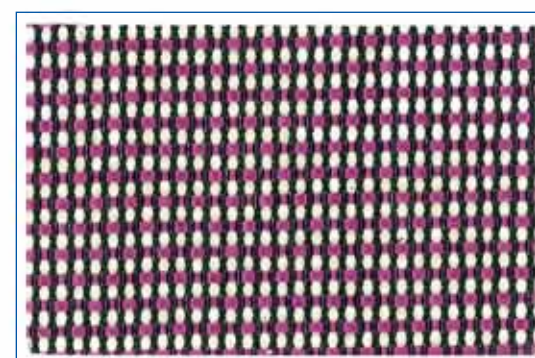
Color 6  
Autumn Tan



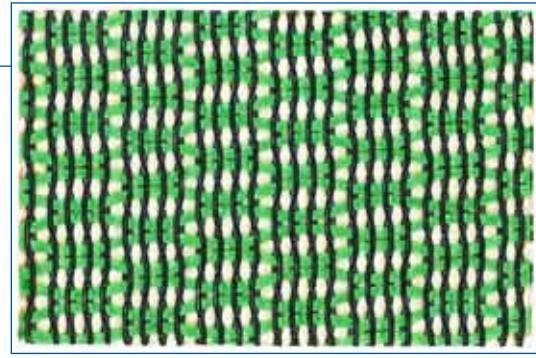
Color 8  
Coffee



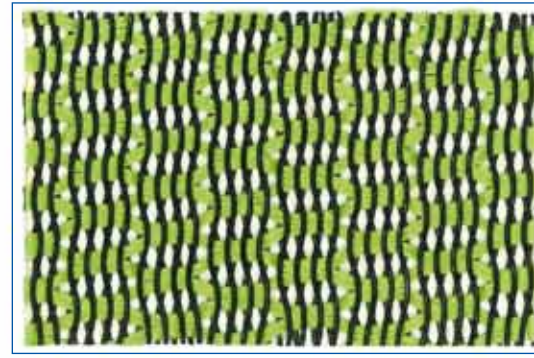
Color 26  
Violet\*



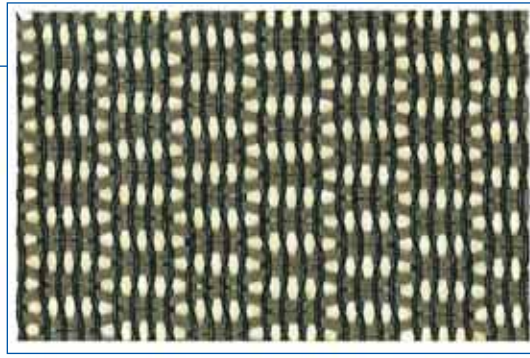
Color 26  
Violet - W02\*



Color 30  
Emerald



Color 65  
Herbal Green



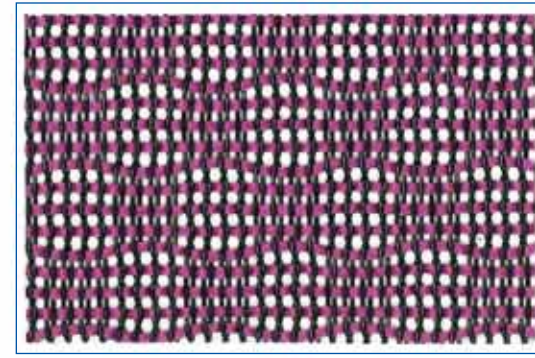
Color 50  
Beige



Color 51  
Neutral



Color 26  
Violet - W60\*



Color 26  
Violet - MB116\*

\*All swatches in this booklet are shown in the W 09 weave, except for the four marked with an asterisk. These four samples display the violet color in other weaves. The colors presented in this booklet are available with any of our weaves.