

# Collage™

A Matrex®/ Leggett & Platt Product



## Elastomeric Fabrics For Seating Suspensions

Office • Residential • Health Care • Transportation

*Custom engineered to meet  
the most demanding specifications.*

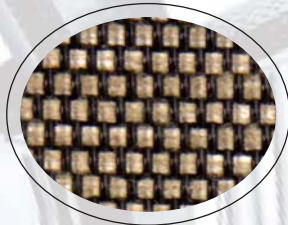


**Matrex®**

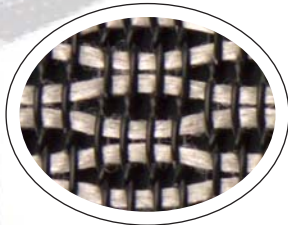
A Leggett & Platt COMPANY

911 Northridge St. ¥ Greensboro, NC 27403  
ph. 336-379-7777 ¥ fax 336-379-7774

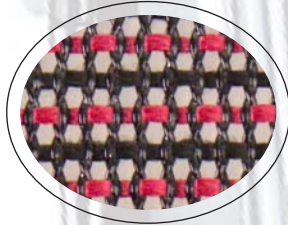
COLLAGE<sup>®</sup> fabrics have a polyester co-polymer elastomeric monofilament on the warp direction. When stretched, this material yields excellent load bearing properties and resiliency. The fill yarns may be polyester, nylon, or other fiber depending on the intended use.



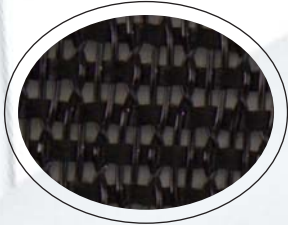
W-60



W-09



W-02



W-18

## Patterns

COLLAGE<sup>®</sup> is available in many different weave patterns, including jacquards where specific designs and logos may be obtained.

## Colors

COLLAGE<sup>®</sup> is available in many different colors, including custom colors.

## Application

COLLAGE<sup>®</sup> fabrics must be tensioned for the fabric to work properly and yield a comfortable, resilient seat. We generally recommend to stretch the fabric 5%. COLLAGE<sup>®</sup> fabrics can be sewn, stapled, and adhesive bonded to other substrates.

## Cleanability

Use mild household or hospital detergents. DO NOT use petroleum distillates.



A *Leggett & Platt* COMPANY

911 Northridge St. ¥ Greensboro, NC 27403  
ph. 336-379-7777 ¥ fax 336-379-7774

## Tests

Properly applied COLLAGE<sup>®</sup> fabrics typically show less than 5% load bearing loss when tested according to BIFMA standards.

### Test Procedures

	Test Results	
	Warp	Fill
Yarn Slippage (lbf) ASTM D 4034-92	63.3	42.0
Colorfastness to Water ASTM D 3597-95a, Sec. 7.6	Shade: 5 Stain: 5	
Colorfastness to Solvent ASTM D 3597-95a, Sec. 7.7	Shade: 5 Stain: 5	
Resistance to Pilling ASTM D 3511-82 (Brush)	5 - No Pilling	
	Warp	Fill
Breaking Strength ASTM D 5034-95 (Grab)	406.7	233.0
Resistance to Pilling ASTM D 3511-99 (Brush)	5 - No Pilling	
Surface Abrasion ASTM D 3597-95A, Sec. 7.4	Passed 50,000 Cycles	
Abrasion Resistance	+50,000 Wyzenbeck	
Colorfastness to Crocking AATCC 8-2001	Dry - 4.5 Wet - 5	
Colorfastness to Light AATCC 16-2003 (Opt. 3)	After 40 Std. Hours Grade 5	
California 117	Pass	

British Standards 5852: Section 4, 12.4

Ignition Source	Test Results
Butane Flame	#1 PASS (No flaming or progressive smouldering)

Note: Test results will vary depending on specific weave. Other flammability requirements may be met depending on specifications.